

USC TARA – Total Access for Research Administration

April 10, 2012

Randolph Hall

Vice President of Research Administration

System Naming and Components

Christine Lavoie

Director of Research Administration

System Naming

- January 2012 Newsletter announced the RAS naming contest
- Received a total of fifty-seven entries across 16 schools and or departments
- Narrowed the pool to ten top choices
- Difficult choosing a winner

System Naming

- Winning entry submitted by Michelle Tam from the Computer Science Department, Viterbi School of Engineering
- Why USC TARA- Total Access for Research Administration



USC TARA – Components

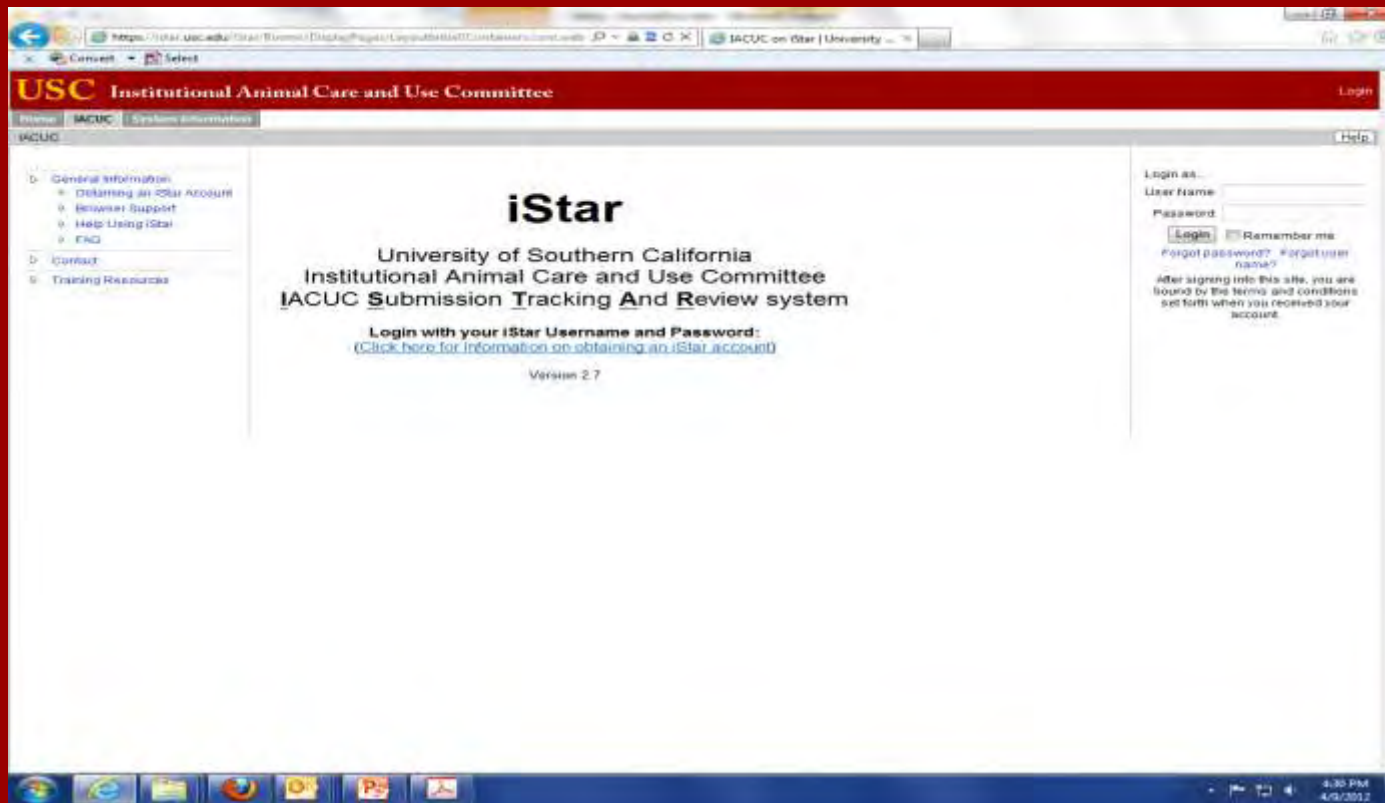
- Kualo Coeus (KC) – Pre and Post Award Management System

USC TARA – Components

- **Kuali Financial (KFS)** – Integration with KC implementing the business process transactions
- **Financial projection and modeling system** – Mitigating the need for shadow system accounting
- **Effort Certification (ECert)** – Verification of effort on sponsored projects

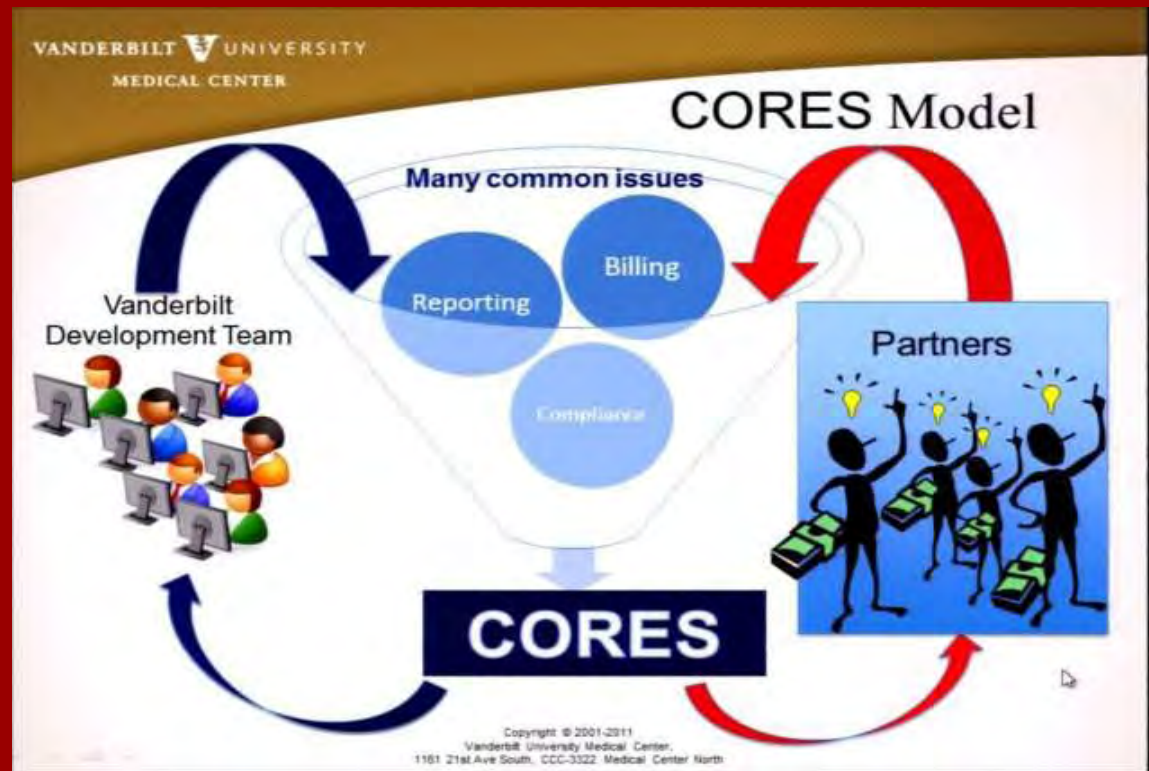
USC TARA – Components

- iStar – IRB Submission Tracking and Review
- IACUC – Institutional Animal Care and Use Committee



USC TARA – Components

- diSClose – Conflict of Interest Submission
- iSafety – Radiation and BioSafety
- CORES – Service Center Recharge



USC TARA

System Interfaces, Integration & Reporting

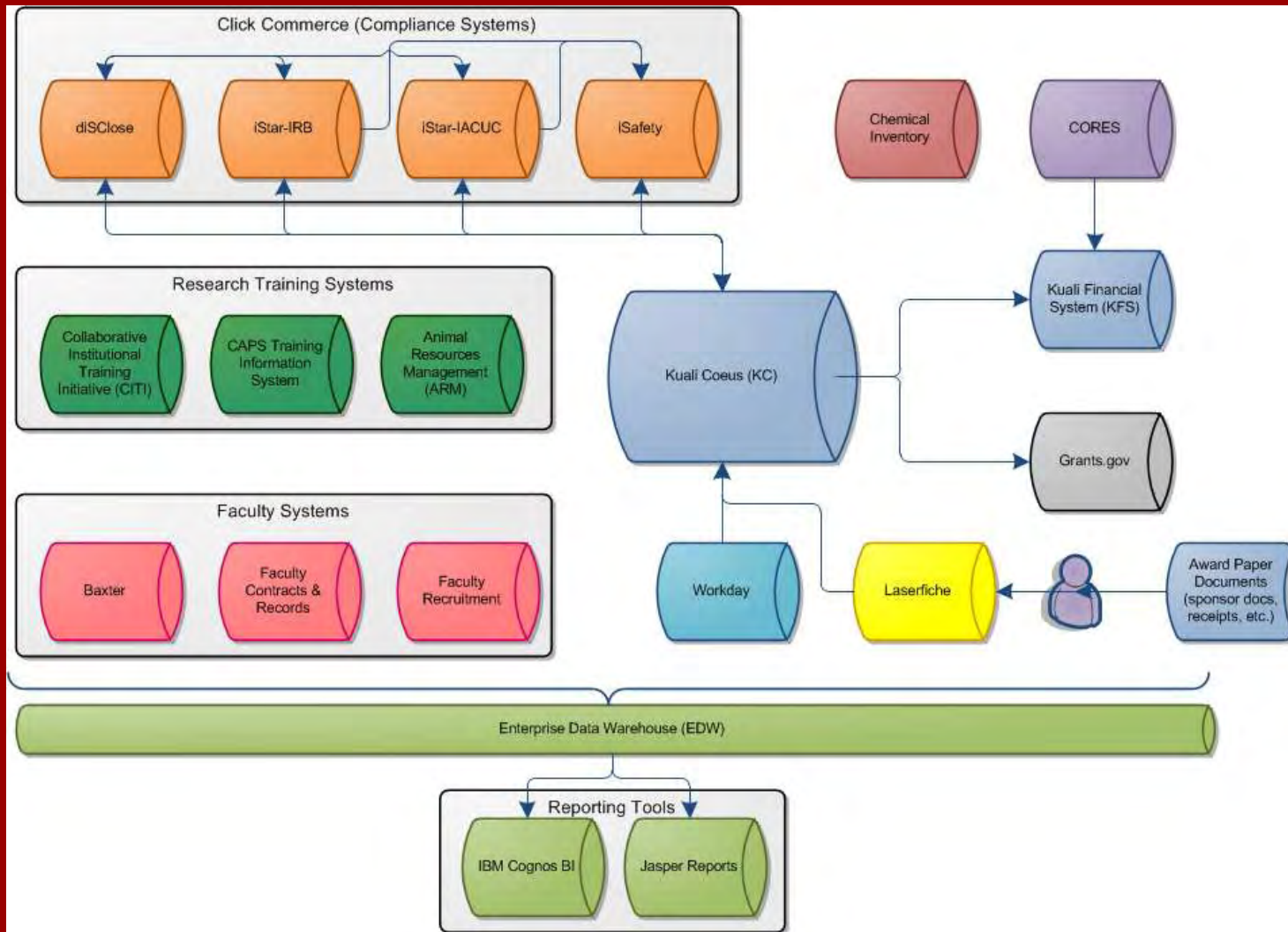
Randolph Hall

Vice President of Research Administration

System Interfaces

- Kuali Coeus to/from
 - Click Commerce
 - Kuali Financial System
 - Grants.gov
 - Workday
 - Laserfiche
- Kuali Financial System to/from CORES
- Enterprise data warehouse: reporting tools
- Faculty systems interfaces
- Research training system interfaces

TARA Integrations



Reporting

- Standard + Customized Reports
- Improve upon SCERA and school reports
- Monitor activity, flag successes and danger signs
 - Proposals, Awards, Accounts, Expenditures
 - Performance: success rate, ratios (\$ IDC/sq ft)
 - Drill down: \$ spent at USC vs. subs, PI vs. co-PI
 - Simple graphical displays
 - Track over time: monthly, 12 month rolling, year to date; track at least three years
 - Multiple levels of aggregation: investigator, division, department, center/institute, school, university; by agency